

Bridge/Webshop interactions

[Introduction](#)

[1. Bridge requests for new job](#)

[2. Webshop response](#)

[3. Bridge jobs download](#)

[4. A job is completed](#)

[5. Example of JDF produced by the Webshop](#)

Introduction

This document describes the way Caldera Bridge interacts with Caldera Webshop solution. The full process is based on JMF/JDF communications via HTTP. The aim of those exchanges is to send order information (jobs) from the Webshop to Caldera RIP.

1. Bridge requests for new job

The Bridge (RIP) can be configured to call a Webshop URL (manually, using JobTracker). This action tells the Webshop that the Bridge (RIP) is awaiting new jobs if available. The command is sent via HTTP POST request.

JMF command :

```
<JMF xmlns="http://www.CIP4.org/JDFSchemas\_1\_1" SenderID="RIP01"
      Timestamp="2013-04-17T10:24:11Z" >
  <Command ID="C001" Type="RequestQueueEntry">
    <RequestQueueEntryParams QueueURL="http://ip\_of\_rip/controller" />
  </Command>
</JMF>
```

Command/RequestQueueEntryParams/@QueueURL is the URL where the answer from the Webshop should be sent. In our case, we don't need it because the Webshop answers directly to the HTTP POST request from the Bridge.

2. Webshop response

When Webshop receives a RequestQueueEntry command as HTTP POST request, it answers with a JMF command (as HTTP response on the same channel) containing URLs to the actual

jobs. This way of job submission is not JMF/JDF compliant but is a workaround when partial filtering has to be kept. It requires an unfiltered channel in one direction (the Bridge (RIP) must be able to contact the Webshop).

JMF command :

```
<JMF xmlns="http://www.CIP4.org/JDFSchemas\_1\_1" SenderID="WebShop01"
      TimeStamp="2013-04-17T10:24:13Z" >
  <Command ID="R001" Type="SubmitQueueEntry">
    <QueueSubmissionParams URL="http://myip/givejob.php?job10023"
      ReturnURL="http://myip/jobcompleted.php" refID="C001" />
  </Command>
  <Command ID="R002" Type="SubmitQueueEntry">
    <QueueSubmissionParams URL="http://myip/givejob.php?job10025"
      ReturnURL="http://myip/jobcompleted.php" refID="C001" />
  </Command>
</JMF>
```

3. Bridge jobs download

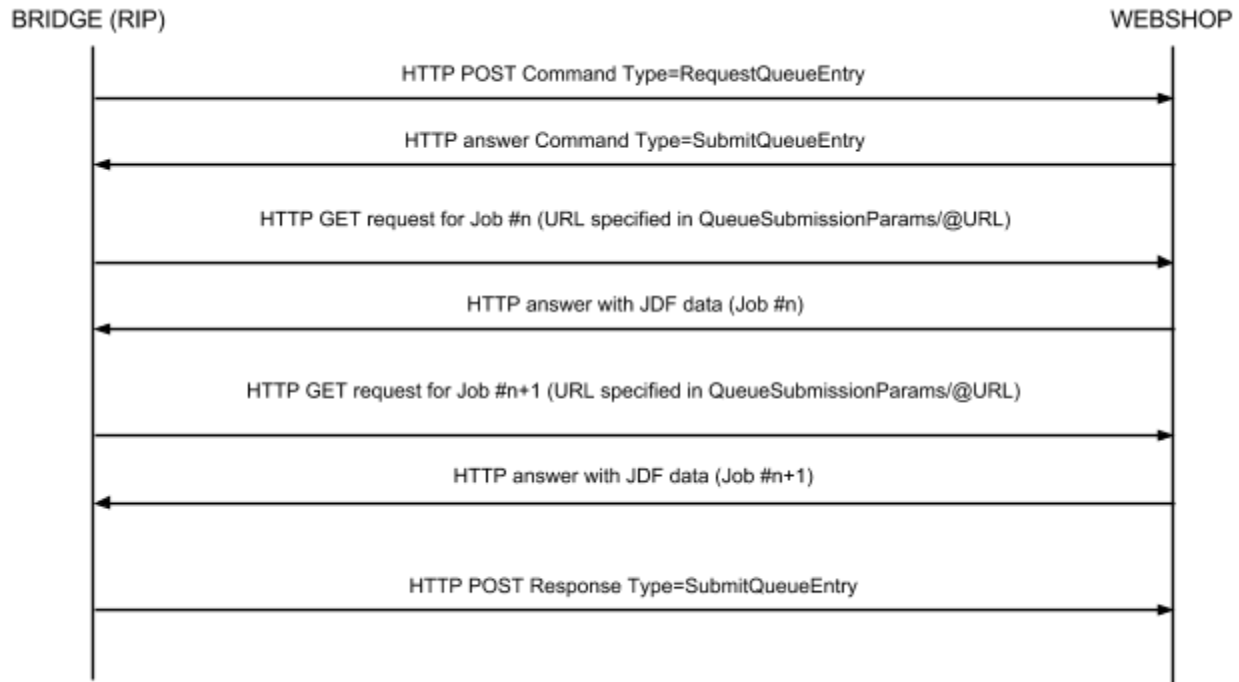
The Bridge (RIP) retrieves the the jobs (in JDF format) from URLs specified in JMF/Command/QueueSubmissionParams/@URL (one URL per job). This URL must point on a JDF or a script which start the download of a JDF. The job request is a HTTP GET.

After downloading the JDF jobs, the Bridge (RIP) sends a JMF response to confirm successful job submission (or errors). The JMF is sent as HTTP POST request to the same URL where the first JMF RequestQueryEntry command has been sent at the beginning. A job can be considered as successfully submitted only after the confirmation is received and does not contain errors.

```
<JMF xmlns="http://www.CIP4.org/JDFSchemas\_1\_1" SenderID="RIP01"
      TimeStamp="2013-04-17T10:25:28Z">
  <Response ID="C004" refID="R001" Type="SubmitQueueEntry">
    <QueueEntry JobID="JDF0034" QueueEntryID="125" Status="Waiting"/>
    <Queue DeviceID="mydevice" Status="Running">
  </Response>
  <Response ID="C005" refID="R002" Type="SubmitQueueEntry">
    <QueueEntry JobID="JDF0035" QueueEntryID="126" Status="Waiting"/>
    <Queue DeviceID="mydevice" Status="Running">
  </Response>
</JMF>
```

4. A job is completed

When a job has been completed (or is in error) in the Bridge (RIP), the JDF (completed by the job status) is sent to the return URL (Command/QueueSubmissionParams/@ReturnURL) as a HTTP POST request with the JDF in request body.



5. Example of JDF produced by the Webshop

```

<?xml version="1.0" encoding="utf-8"?>
<JDF xmlns="http://www.CIP4.org/JDFSchemas_1_1"
xmlns:cal="http://www.caldera.com/jdf"
xmlns:xsi="http://www.w3.org/2001/XMLSchema-instance"
ID="mainJDF530f59fc732e1100000065" JobID="mainJob530f59fc732e1100000065"
JobPartID="530f59fc732e1100000065" Status="Ready" Version="1.4"
ICSVersions="Base_L1-1.4" DescriptiveName="Caldera Webshop #100000065 1/1"
Type="DigitalPrinting" >
  <AuditPool>
    <Created AgentName="Caldera Webshop" AgentVersion="1.0"
TimeStamp="2014-02-27T15:30:04+00:00"/>
  </AuditPool>
  <ResourcePool>
    <CustomerInfo ID="CI530f59fc732e1100000065" Class="Parameter"
Status="Available" CustomerID="1" CustomerOrderID="530f59fc732e1100000065">
      <Contact ContactTypes="Customer">
        <Address City="eckbolsheim" Country="FR" PostalCode="67201" Street="1
rue des freres lumiere" Region="Bas-Rhin"/>
        <Company OrganizationName=""/>
      </Contact>
    </CustomerInfo>
  </ResourcePool>
</JDF>

```

```

        <ComChannel ChannelType="Phone" Locator="Tel:"/>
        <Person FirstName="Customer" FamilyName="Caldera">
            <ComChannel ChannelType="Email"
Locator="mailto:customer@caldera.com"/>
        </Person>
    </Contact>
    </CustomerInfo>
    <DigitalPrintingParams Class="Parameter" ID="DPP530f59fc732e1100000065"
Status="Available"/>
        <Component Class="Quantity" ComponentType="FinalProduct"
ID="C530f59fc732e1100000065" Status="Unavailable"/>
        <RunList Class="Parameter" ID="RL530f59fc732e1100000065"
PartIDKeys="Run" DescriptiveName="Files" Status="Available">
            <RunList Run="0" DocCopies="1">
                <LayoutElement>
                    <FileSpec
URL="http://srv-w2pdev-1/~angsthelm/dev/index.php/sales/download/downloadCusto
mOption/id/615/key/292ad3ba1b0dfd80ed79"
UserFileName="MonumentValley_FS.pdf.pdf"/>
                </LayoutElement>
            </RunList>
            <RunList Run="1" DocCopies="2">
                <LayoutElement>
                    <FileSpec
URL="http://srv-w2pdev-1/~angsthelm/dev/index.php/sales/download/downloadCusto
mOption/id/618/key/95e0dc611f7ebceeb399" UserFileName="NYC_byNight.pdf"/>
                </LayoutElement>
            </RunList>
        </RunList>
    </ResourcePool>
    <ResourceLinkPool>
        <DigitalPrintingParamsLink Usage="Input"
rRef="DPP530f59fc732e1100000065"/>
        <RunListLink Usage="Input" rRef="RL530f59fc732e1100000065"/>
        <CustomerInfoLink Usage="Input" rRef="CI530f59fc732e1100000065"/>
        <ComponentLink Usage="Output" rRef="C530f59fc732e1100000065"/>
    </ResourceLinkPool>
</JDF>

```