

# CALDERA NEXIO Startup Kit

## White Paper

This document describes the various documentations and tools available.

Rev : 150609

### Table of contents

Table of contents	1
<b>Change Log</b>	<b>2</b>
<b>Documentations</b>	<b>3</b>
<b>Simulator</b>	<b>4</b>
<b>Other submission Methods</b>	<b>13</b>
<b>Samples</b>	<b>14</b>

## Change Log

---

- 150629 -> Up      Update to V10.1 features:
- JDF GangName Support
  - JDF Layout Support
  - New Simulator Including JMF command submissions, and feedback.
- 170411-> Up      Update to V11.1 features :
- Partial Print-Config + Preset
    - o You can now Specify a DeviceID of the form Printer:Preset
    - o And combine it with a partial PrintConfig ( cal:PrintConfig )
    - o Both will be merged, this allows to use a Generic Preset and simple overwrite the scale and/or the media for example.
  - PrintConfig export in JDF Output ( ResourceAudit )
    - o For each Print event on a job, you can now choose to have the effective PrintConfig ( so the printing conditions ) exported. ( This in an option in the Nexio configuration window ).
- 210810 -> Up      Update to V11.2 features :
- Adding JMF commands for testing / Debugging ( All supported JMF command of Nexio and Options )
    - o JMF command are located in
      - /var/www/caldera/html/Nexio/ToolKit/JMF\_Commands ( Linux )
      - /Library/WebServer/Caldera//Nexio/ToolKit/JMF\_Commands (Mac )
      - Each command can be run with a -h for help.
      -
    - o
  - mk\_jmf script can be used to generate JDF tickets :
    - o mk\_jmf is located in
      - /var/www/caldera/html/Nexio/ToolKit/Scripts ( Linux )
      - /Library/WebServer/Caldera//Nexio/ToolKit/Scripts (Mac )
      - Each command can be run with a -h for help
  - Added 2 Sample files
  -

## Documentations

---

### ***Automation-Reporting-WhitePaper***

Introduction to Automation JDF/JMF.

### ***CalderaJDF\_XXXX***

Caldera JDF/JMF Specifications.

### ***Enfocus-Switch-CalderaNexio***

Caldera Nexio / Enfocus Switch Guideline.

### ***tFLOW-NexioIntegration***

Caldera Nexio / Tucana tFlow Guideline.

### ***CalderaNexioWebshopinteractions***

Caldera Specifications for JDF WebShop Integrations.

### ***JobExport\_Info\_Spec***

Caldera Specifications for Job Export.  
This is what is reported in the JDF Audit-Pools.

### ***PrintConfigXML-X.XX***

Caldera Specifications for Print-Config.  
This is the cal:PrintConfig node of the JDF.

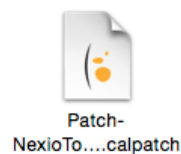
## Simulator

### *Patch-CalderaNexioToolKit*

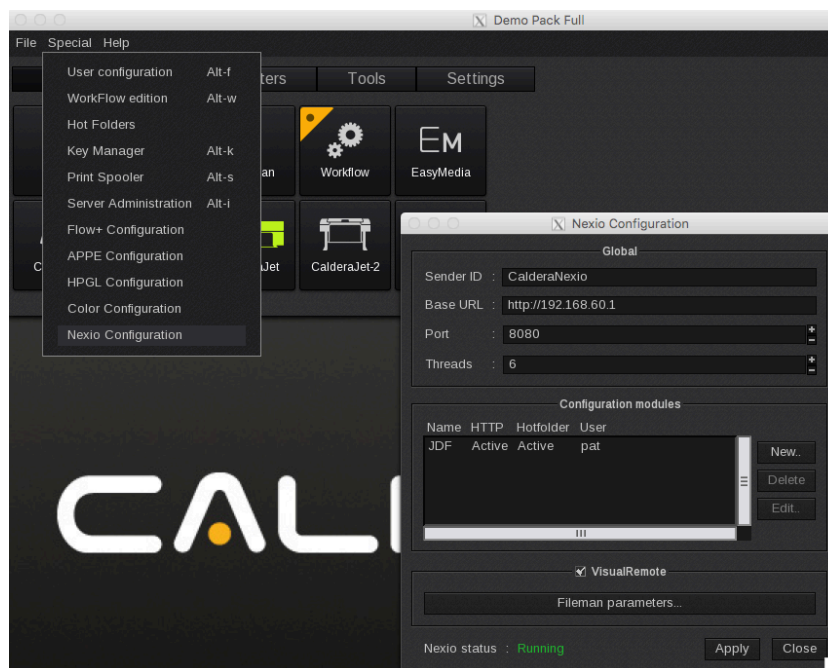
Patch to install to use the Simulator.

### *Installation*

- A CalderaNexio License is necessary to use the simulator.
- Start by installing the provided patch as a regular Caldera Patch.



- Restart your Caldera Software

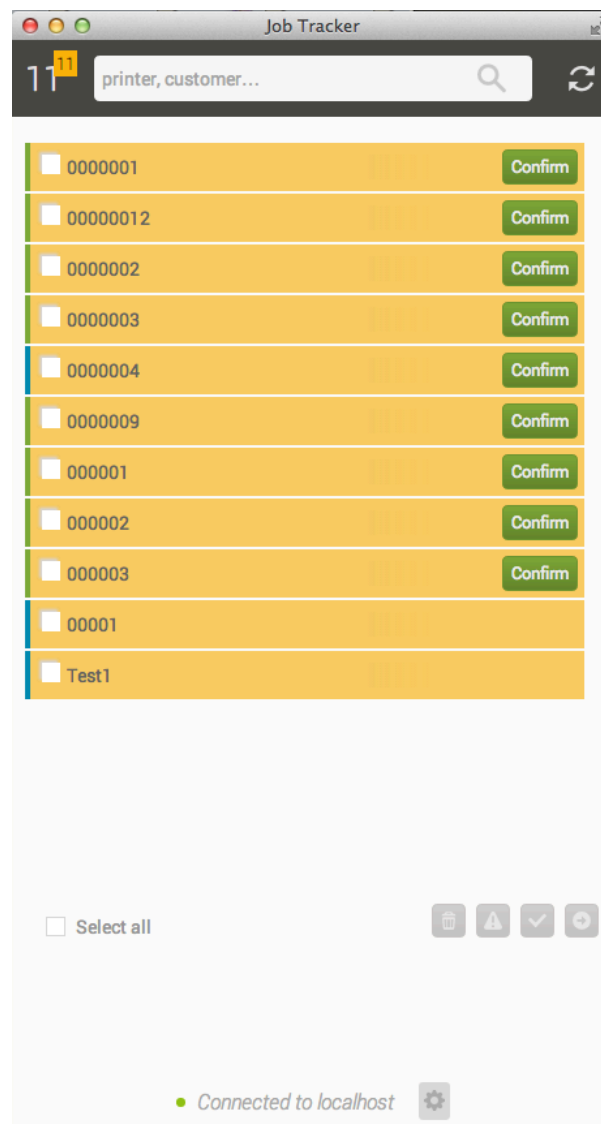


- Once restarted open the *Special* menu / *CalderaNexio Configuration*.
- Apply, and restart Caldera.

- Once Restarted you should have 1 new icon.

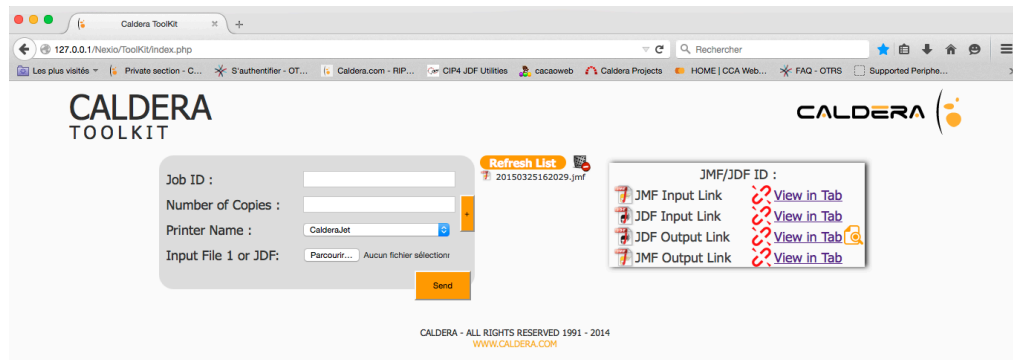



Each and single will open the “Job Tracker”



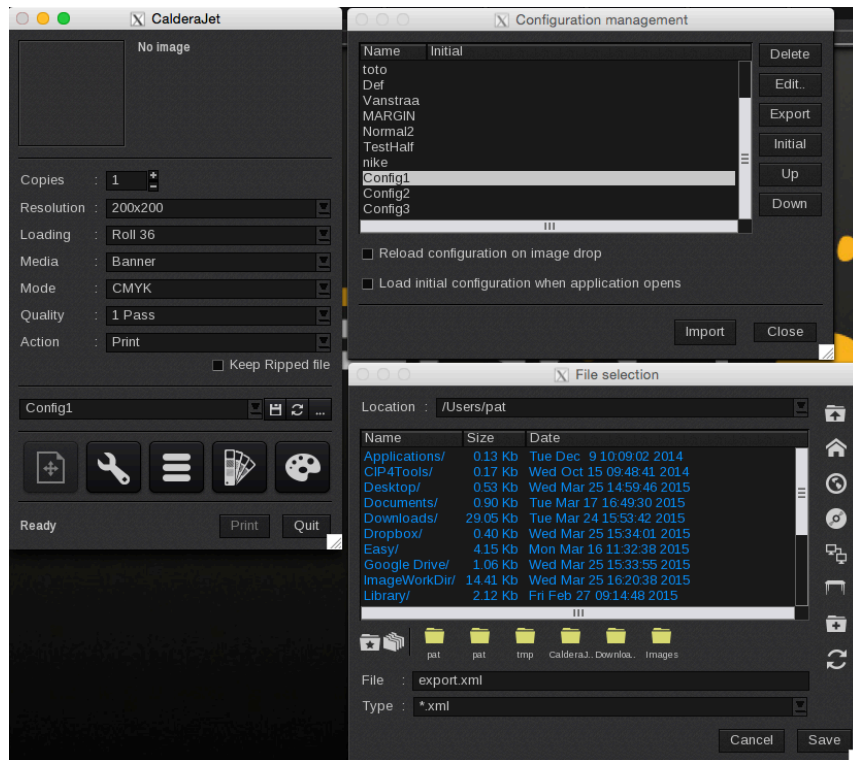
### How to use it.

- Open a Web-Browser, and browse to <http://<ip-of-rip>/Nexio/ToolKit/>
- For example from the rip itself : <http://127.0.0.1/Nexio/ToolKit/>.
- The following Page should appear.



- **Job ID:** This is a descriptive ID of the Job.  
**( a Unique JDF ID is generated if unspecified ).**
- **Number of Copies :** Number of copies to be printed
- **Printer Name :** Name of the Printer ( This is retrieved automatically in V10, with each Preset saved as well ).  
A printer Labelled XXX:YYY contains a preset saved in the GUI Of Caldera, selecting the following will automatically use these Settings in a Wokflow of Graphically
- **Input File** Files to be submitted
  - o Files to be submitted ( PDF, TIFF ... ).
  - o You can also submit a JDF file ( see below JDF-JMF ).
- When clicking the  new options will appear
  - o Job Name Job Name
  - o Job Comment Job Comment
  - o Order Number Order Number
  - o Customer Name Customer Name
  - o Input File XXX Additional files to be submitted
  - o JDF GangName Optional GangName, GangName can be used in case of nesting. Only elements containing the same GangName will be nested together.

- **JDF ID:** This is the unique ID a the JDF, must be unique.  
( a Unique JDF ID is generated if unspecified).
- **PrintConfig XML** Print-Config exported ( Will overwrite Preset Printers ( XXX:YYY )  
PrintConfig can be exported from the Printer Window



- Following are only possible if a PrintConfig XML is supplied
  - OverWrite Scale New scale in decimal : 1 = 100%
  - Overwrite Resolution Resolution Name : 360x360 for example
  - Overwrite Loading Loading Name : Roll 54 for example
  - Overwrite Quality Quality Name : 4 Pass for example
  - Overwrite Color Mode ColorMode Name : CMYKcm for example

- **JDF-JMF**
  - **Create JMF** Action to be performed  
JMF and JDF files are created
  - **Create JDF** Simple JDF file is created
  - **Create JMF/Alces** Creates a JMF file that can be submitted via alces  
<http://community.cip4.org/tools/alces/>
  - **Submit JDF** Submits JDF supplied as *Input File 1* ( a JMF will be created associated to the JDF to get feedback , this can be used to test JDF files ).

#### List :

- List of Existing JMF files

#### JDF/JMF ID

When clicking on one of the Links you will see :

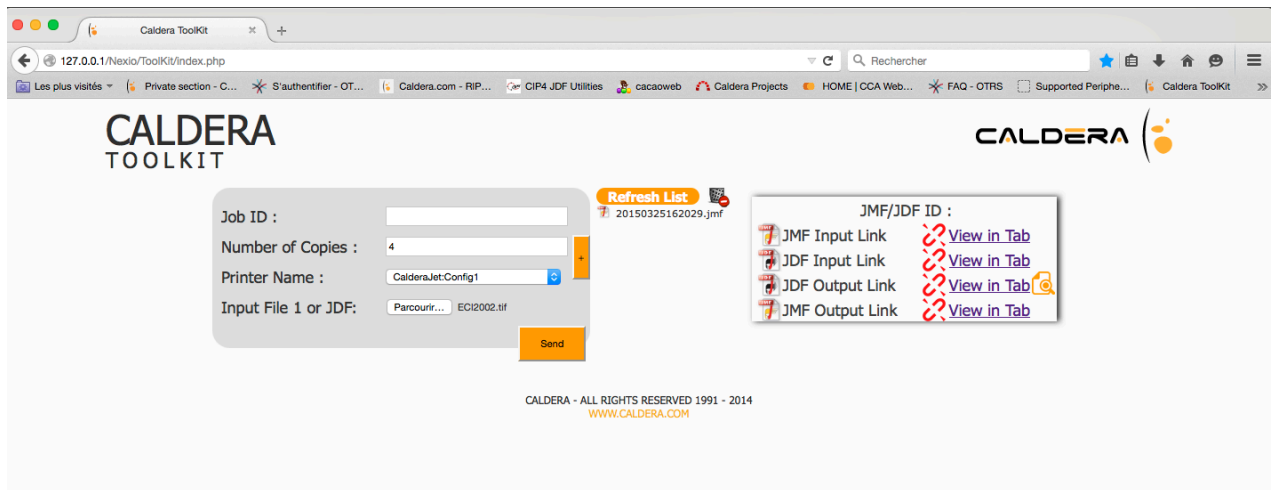
- **JMF Input :** The generated JMF file.
- **JDF Input :** The generated JDF file.
- **JDF Output :** The JDF output file once the file is printed.
- **JMF Output :** The JMF output file result of the submission.



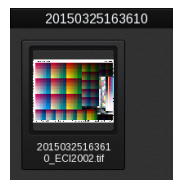
- Will display the JDF Output information of the selected Job ( only once the job is printed ).
- *This will only work when submitting JMF.*



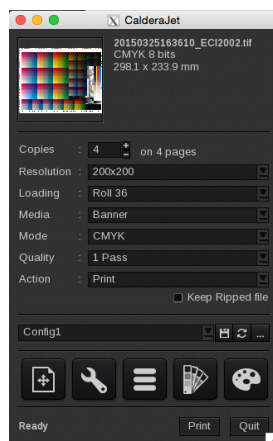
Example using **JMF**.



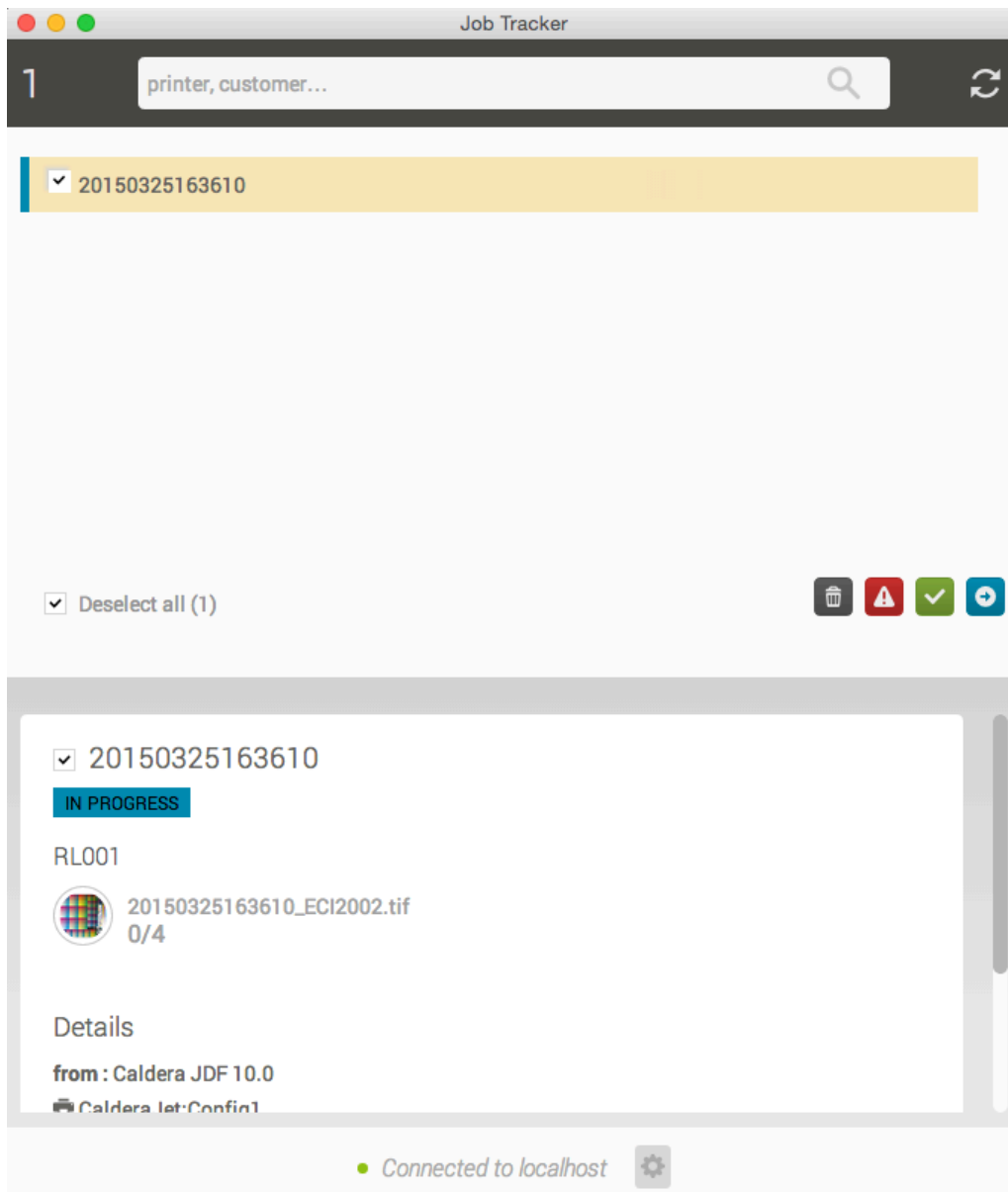
The file should be loaded into the *ImageBar* in a Tab called *by the Job Ticket ( JDFID ) number*.




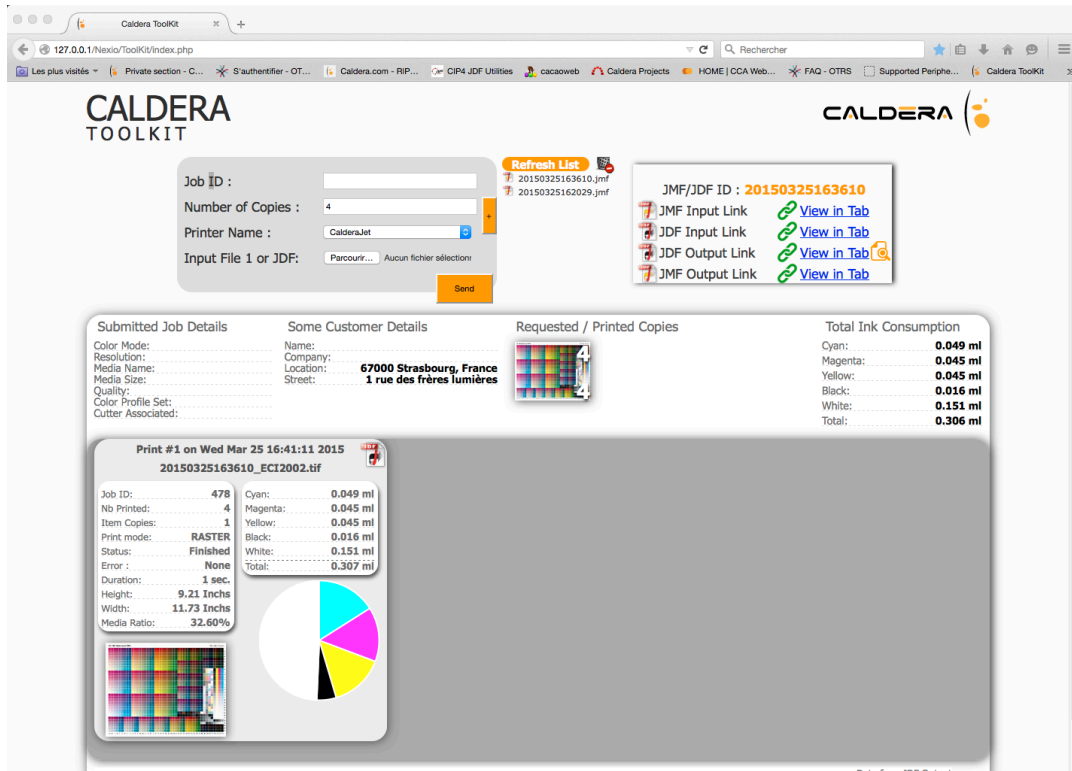
Selecting the file and pressing **Enter** should open the correct printer specified in the tool and Preset or PrintConfig



The file will also appear in the *JobTracker*



Once the file is printed if you click on  the following will appear, this uses the JDF Output file, and shows information related to the print.



The screenshot shows the CALDERA TOOLKIT web interface. At the top, there's a navigation bar with the CALDERA logo. Below it, a form for job submission is visible, including fields for Job ID, Number of Copies (set to 4), Printer Name (set to CalderaJet), and Input File 1 or JDF. A 'Send' button is at the bottom of the form. To the right, a 'Refresh List' button and a list of jobs are shown. Below the form, there's a section for 'Submitted Job Details' and 'Some Customer Details'. The 'Submitted Job Details' section includes a table with job information and a pie chart showing ink consumption. The 'Some Customer Details' section includes a table with customer information. The 'Requested / Printed Copies' section includes a table with copy information. The 'Total Ink Consumption' section includes a table with ink consumption data.

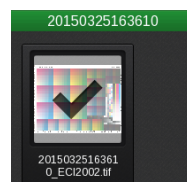
Submitted Job Details	
Color Mode:	
Resolution:	
Media Name:	
Media Size:	
Quality:	
Color Profile Set:	
Cutter Associated:	

Some Customer Details	
Name:	
Company:	
Location:	67000 Strasbourg, France
Street:	1 rue des frères lumières

Requested / Printed Copies	
Job ID:	478
Nb Printed:	4
Item Copies:	1
Print mode:	RASTER
Status:	Finished
Error:	None
Duration:	1 sec.
Height:	9.21 Inches
Width:	11.73 Inches
Media Ratio:	32.60%

Total Ink Consumption	
Cyan:	0.049 ml
Magenta:	0.045 ml
Yellow:	0.045 ml
Black:	0.016 ml
White:	0.151 ml
Total:	0.306 ml

The file should also be tagged as done in the ImageBar

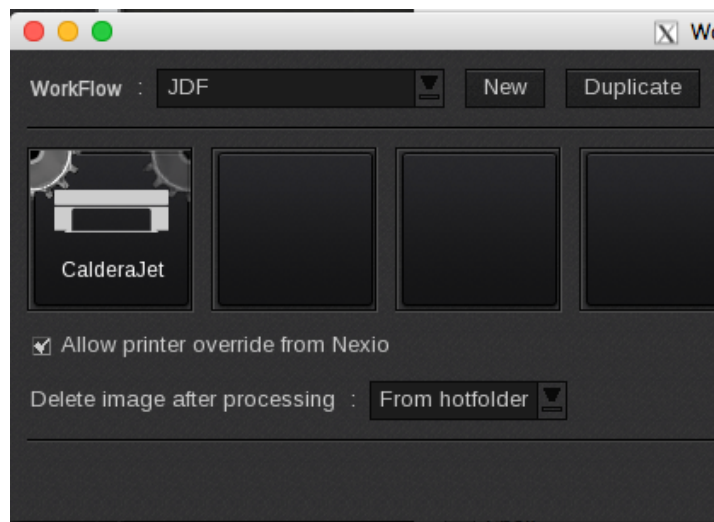


Note :

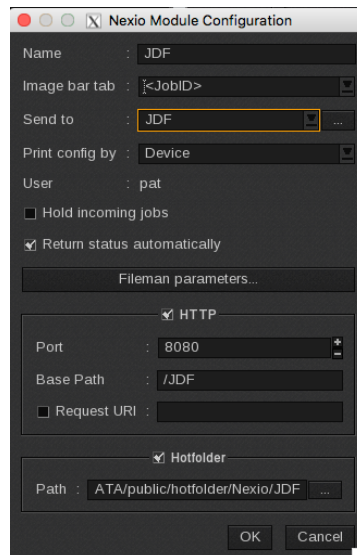
- This is only a simulator showing the capabilities of extracting informations from a JDF report
- File submissions are limited to 100 MBytes
- JDF Output and printing information will only exist once the file is printed ( the initial required number of copies ).
- Ripping is not sufficient; printing is required as action in the rip.
- We suggest using a "File Based driver for testing": For ex Misc-Tiff-Halftone.

If you wish to have the file printer automatically you have to :


- Create a workflow and check the “Allow printer override from CalderaNexio”
  - o The printer used to build the workflow is no relevant, the JobTicket will contain the correct printer and Preset or PrintConfig.
  - o If no Preset ( Printer as XXX:YYY ) or PrintConfig is Specified then the Workflow config will be used.



- Link the CalderaNexio JMF entry to that workflow.



If the “Hold incoming jobs” is selected, then Jobs appear in the *JobTracker*,

When pressing the  button the job will be sent to the rip.

## Other submission Methods

---

CalderaNexio also support CSV/TXT/XML based ticket submissions, via an extra module “Translator”

*This feature is not documented and reserved to the Solution Integration team, and needs to be studied case by case to analyze doability, and required time.*

## Samples

---

### *Single-Job-2-Copies*

- **JOBID :** 20150609112046
- **File :** FlameBoy\_Cut.eps
- **Printer :** CalderaJet:Normal
- **Copies :** 2

### *Single-Job-2-Copies-3-Copies*

- **JOBID :** 20150609112245
- **File :** FlameBoy\_Cut.eps
- **Printer :** CalderaJet:Normal
- **Copies :** 2
- **Reprint of 3 Copies from RIP.**

### *Two Jobs Nested*

- **JOBID :** 20150609112433
- **File :** FlameBoy\_Cut.eps
- **Printer :** CalderaJet:Nest
- **Copies :** 2
  
- **JOBID :** 20150609112444
- **File :** QuickCal.tif
- **Printer :** CalderaJet:Nest
- **Copies :** 3

Nested into one print.

### *JDF Layout 2 Files*

- **JOBID :** 20150609094727
- **File :** FlameBoy\_Cut.eps
- **Copies :** 2
- **File :** PantoneTest.eps
- **Copies :** 1
- **Printer :** CalderaJet:Normal

JDF Layout element, A0 Page created.

PantoneTest.eps :  
 FlameBoy\_Cut.eps:  
 FlameBoy\_Cut.eps:

Rotation 0° , Scale 100% , Position 0,0 ( Bottom left )  
 Rotation 0° , Scale 200% , Position 710,868 ( Top Right )  
 Rotation 90° , Scale 200% , Position 500,500 ( on the page )

*Xslt Sample*

- **Input-Ticket.xml:** Simple Input Xml sample
- **JDF.xsl:** Xslt 1.0 Style Sheet
- **Output-JDF.xml:** The JDF Output file from the Xslt Transformation

*Simple.jdf*

Simplest possible JDF file, values between #XX# have to be filled in with a relevant value.

- **JOBID :** #UNIQUEJDFID# ( Ex 1234 )
- **ID :** #UNIQUEJDFID# ( Ex 1234 )
- **DescriptiveName:** #JOBNAME# ( Ex Job1234 )
- **FileSpec:** File Path ( Ex : [File:///MyFolder/file.pdf](#) )
- **DeviceID:** #DEVICEID# ( Ex: CalderaJet:Normal )
- **Amount:** #COPIES# ( Ex : 1 )
- **TimeStamp:** #TIMESTAMP# ( Ex : 2018-02-20T15:08:10+01:00 )
- 

*Full.jdf*

Simplest possible JDF file, values between #XX# have to be filled in with a relevant value.

- **JOBID :** #UNIQUEJDFID# ( Ex 1234 )
- **ID :** #UNIQUEJDFID# ( Ex 1234 )
- **DescriptiveName:** #JOBNAME# ( Ex Job1234 )
- **FileSpec:** File Path ( Ex : [File:///MyFolder/file.pdf](#) )
- **DeviceID:** #DEVICEID# ( Ex: CalderaJet:Normal )
- **Amount:** #COPIES# ( Ex : 1 )
- **TimeStamp:** #TIMESTAMP# ( Ex : 2018-02-20T15:08:10+01:00 )
- 
- **CustomerID:** # CUSTOMERID# ( Ex : Customer123 )
- **CustomerOrderID:** # CUSTOMERORDERID# ( Ex : Order123 )
- **Contact\***
- 
- **End:** #DUEDATETIMESTAMP# ( Ex : 2018-02-20T15:08:10+01:00 )
- 
- **Media@ProductID:** # MEDIANAME# ( Ex : Banner ) ( These will overwrite the meda in the printer )
- **Media@ DescriptiveName:** # MEDIADESCRIPTION# ( Ex : Banner ) ( These will overwrite the meda in the printer )
- **Media@MediaUnit:** # MEDIATYPE# ( Roll / Sheet ) ( These will overwrite the loading in the printer )
- **Media@ Dimension:** # DIMENSIONS# ( Ex : 2592 0 ( In points ) ) ( These will overwrite the loading in the printer )
- **Cal:PrintConfig:** # Overwriting nodes of PrintConfig.
-

